

WE ARE

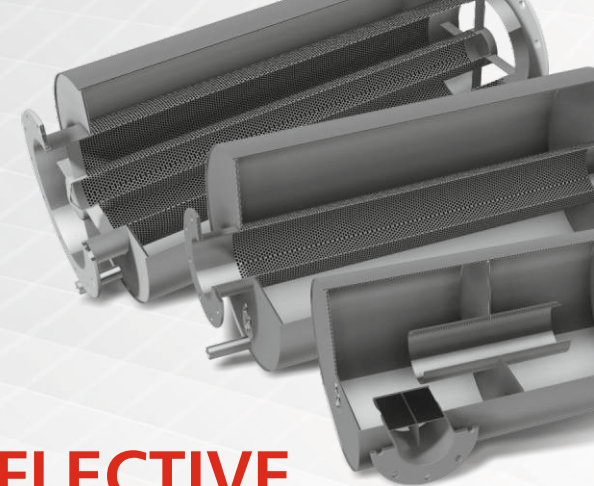
- ♦ We are a multinational team of professionals whom have been working in industrial installations from 1997. Where along the way have gained experience in both design and installation works of Gensets.
- ♦ All of our products are tailored made and fitted to Customers' needs.
- ♦ We offer full range of services starting from consultation and problem solving to ready performing system.
- ♦ All of our products have reliable and durable construction and long lifespan.

OUR EXPERTISE IS

- ♦ Industrial
- ♦ Commercial
- ♦ Maritime
- ♦ Data centers
- ♦ Hospitals
- ♦ Boiler houses
- ♦ Cogeneration stations

WE OFFER

- ♦ Extensive knowledge and expertise in noise solutions.
- ♦ Standard solutions that are quick and cheap.
- ♦ Tailored solutions that are fit to specific requirements.
- ♦ Each inquiry is calculated separately thus providing Customer with the best price/performance solution.
- ♦ Construction flexibility:
 - steel and stainless steel,
 - connection sides,
 - with/without cover insulation,
 - flange types according to DIN standard.
- ♦ Project management through-out project.



REFLECTIVE, COMBI, ABSORPTION SILENCERS



SIA "Mesako Engineering"
Vienības gatve 87^a, Rīga, LV-1004
International Sales: +371 29445362
Email: sales@mesakoengineering.com

www.mesakoengineering.com

QUALITY SERVICES
FOR REASONABLE PRICE

ABSORPTION SILENCERS

WORKING AREA

- ♦ Mid to high noise frequencies (250 - 16000)
- ♦ Attenuation level up to 40dB
- ♦ Flow speed: up to 50m/s
- ♦ Temperature: Max. 600°C
- ♦ Flow medium: All gaseous media

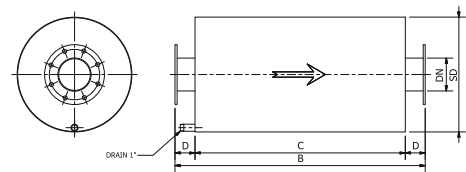
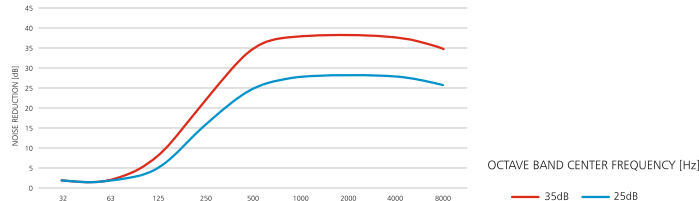
APPLICATIONS

- ♦ CHP units
- ♦ Generator sets
- ♦ Rotary positive/centrifugal blowers
- ♦ Flow noise in ducts due to high flow speeds
- ♦ Small, low-pressure vents
- ♦ Inlet of turbo-charged reciprocating engines
- ♦ Outlet of turbo-charged reciprocating engines

PROS

- ♦ Low pressure resistance
- ♦ Highly effective without large expansion chambers
- ♦ Engine noise and flow noise elimination if applied at the end of an exhaust

TYPICAL NOISE REDUCTION CURVE



STANDARD SILENCERS

Type	Engine power rating [kW]	Nominal diameter [mm]	Nominal diameter [inch]	Silencer diameter [mm]	Silencer length [mm]	Connection length [mm]	Installed length [mm]
Abbreviation		DN	DN	SD	SL	CL	IL
25dB	175 - 300	150	6"	350	750	200	950
	300 - 450	200	8"	400	1050	200	1250
	450 - 650	250	10"	450	1050	200	1250
	650 - 850	300	12"	500	1350	200	1550
	850 - 1250	350	14"	550	1350	200	1550
	1250 - 1500	400	16"	600	1350	200	1550
35dB	1500 - 1750	450	18"	650	1600	200	1800
	175 - 300	150	6"	350	800	200	1000
	300 - 450	200	8"	400	1200	200	1400
	450 - 650	250	10"	450	1200	200	1400
	650 - 850	300	12"	500	1600	200	1800
	850 - 1250	350	14"	550	1600	200	1800
	1250 - 1500	400	16"	600	1600	200	1800
	1500 - 1750	450	18"	650	1800	200	2000

DISCLAIMER:

- ♦ All dimensions of silencers are without outer insulation and with standard flange connections according to DIN standard. Flange type has to be coordinated with Customer upon placing order.

REFLECTIVE SILENCERS

WORKING AREA

- ♦ Low noise frequencies: 32 - 500Hz
- ♦ Attenuation level: 20 - 30dB
- ♦ Flow speed: up to 50m/s
- ♦ Temperature: 600°C
- ♦ Flow medium: All gaseous media

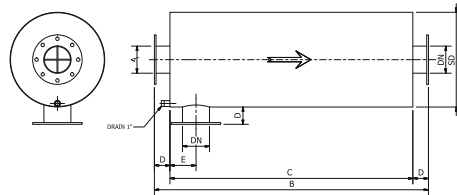
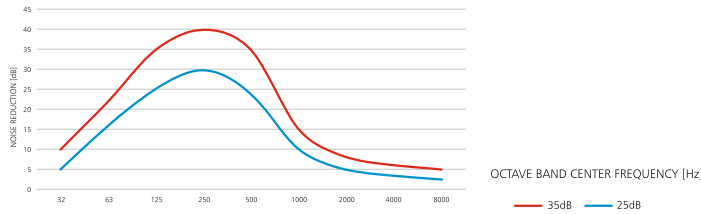
APPLICATIONS

- ♦ Generator sets
- ♦ CHP units
- ♦ Inlet of turbocharged reciprocating engines
- ♦ Outlet of turbocharged reciprocating engines

PROS

- ♦ Highly effective against noise caused by the EFR and CRF
- ♦ Eliminating very pervasive low frequency noise that can almost be felt

TYPICAL NOISE REDUCTION CURVE



STANDARD SILENCERS

Type	Engine power rating [kW]	Nominal diameter [mm]	Nominal diameter [inch]	Silencer diameter [mm]	Silencer diameter with insulation [mm]	Silencer length [mm]	Connection length [mm]
Abbreviation		DN	DN	SD	SD	SL	CL
25dB	175 - 300	150	6"	400	500	1800	300
	300 - 450	200	8"	550	650	1800	300
	450 - 650	250	10"	600	700	1800	300
	650 - 850	300	12"	750	850	1800	300
	850 - 1250	350	14"	850	950	1800	300
	1250 - 1500	400	16"	900	1000	1800	300
35dB	1500 - 1750	450	18"	1000	1100	1800	300
	175 - 300	150	6"	550	650	1800	300
	300 - 450	200	8"	700	800	1800	300
	450 - 650	250	10"	850	950	2000	300
	650 - 850	300	12"	950	1050	2200	300
	850 - 1250	350	14"	1000	1100	2400	300
	1250 - 1500	400	16"	1100	1200	2600	300
	1500 - 1750	450	18"	1200	1300	2800	300

- ♦ All the tables refer to standard silencer dimensions. Tailor made solutions (attenuation level, dimensions, working range etc.) are calculated separately to meet every Customers demands.

COMBI SILENCERS

WORKING AREA

- ♦ Full spectrum attenuation: 32 - 16000 Hz
- ♦ Attenuation level: 20 - 30dB
- ♦ Flow speed: up to 50m/s
- ♦ Temperature: 600°C
- ♦ Flow medium: All gaseous media

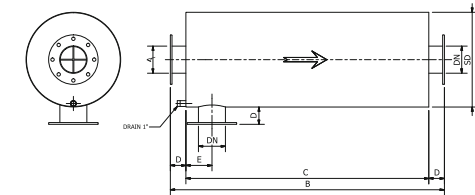
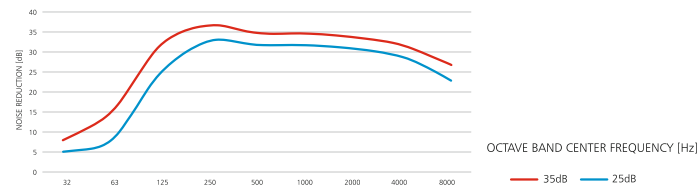
APPLICATIONS

- ♦ Generator sets
- ♦ CHP units
- ♦ Inlet of turbocharged reciprocating engines
- ♦ Outlet of turbocharged reciprocating engines

PROS

- ♦ Eliminating noise on a wide frequency range
- ♦ Only one silencer necessary to obtain good results

TYPICAL NOISE REDUCTION CURVE



STANDARD SILENCERS

Type	Engine power rating [kW]	Nominal diameter [mm]	Nominal diameter [inch]	Silencer diameter [mm]	Silencer diameter with insulation [mm]	Silencer length [mm]	Connection length [mm]	Installed length [mm]
Abbreviation		DN	DN	SD	SD	SL	CL	IL
25dB	175 - 300	150	6"	400	500	2300	300	2600
	300 - 450	200	8"	550	650	2300	300	2600
	450 - 650	250	10"	650	750	2400	300	2700
	650 - 850	300	12"	750	850	2400	300	2700
	850 - 1250	350	14"	800	900	2600	300	2900
	1250 - 1500	400	16"	900	1000	2600	300	2900
35dB	1500 - 1750	450	18"	1000	1100	2700	300	3000
	175 - 300	150	6"	550	650	2300	300	2600
	300 - 450	200	8"	700	800	2300	300	2600
	450 - 650	250	10"	850	950	2600	300	2900
	650 - 850	300	12"	900	1000	2800	300	3100
	850 - 1250	350	14"	1000	1100	3200	300	3500
	1250 - 1500	400	16"	1100	1200	3400	300	3700
	1500 - 1750	450	18"	1200	1300	3600	300	3900

- ♦ Changes made in the tables can be made without notice. For inquiries contact us.
- ♦ Silencer material type depends on surrounding environment and is usually coordinated with Customer for achieving the best performance and price.